

NetEye | SteelEye

## **CCTV System**

IP solution ONVIF  
Hybrid DVR  
Advanced image analysis

DVR HDCCTV.....	4	DVR Accessories.....	21
BOX Cameras HDCCTV .....	6	Stand alone digital recorders.....	22
Optics for HDCCTV Cameras.....	6	Day&Night video cameras .....	23
HDCCTV Bullet Cameras.....	6	Optics for analog cameras.....	24
Mini Dome HDCCTV.....	7	Bullet video cameras.....	25
Speed Dome HDCCTV .....	8	Day&Night video cameras with infrared illuminator.....	26
Monitor HDCCTV.....	8	Speed dome.....	27
Cyclic HDCCTV .....	8	Accessories for Speed dome.....	28
Converter & accessories HDCCTV .....	9	Mini dome.....	29
Software for IP Cameras.....	10	Micro video cameras.....	30
NVR for IP Cameras.....	12	Hidden video cameras .....	30
Box IP Video Cameras.....	13	Infrared lighting systems .....	30
Optics for Box IP Cameras.....	13	Video Matrix.....	31
Bullet Cameras IP .....	14	Video Distributors.....	31
Mini Dome IP .....	14	Monitor .....	32
Speed Dome IP.....	15	Video transmitters .....	33
Video decoder.....	16	Cases .....	35
Accessories for IP cameras.....	16	Open Frame Adaptors .....	35
DVR with internat battery.....	17	Power supply adaptors.....	36
DVR professionali real - Time .....	18	Power supply unit.....	37
Professional real - time DVR in Wall Cabinet .....	19	Supports.....	38
Professional fan - less DVR in Wall Cabinet .....	21	Integrated surveillance software .....	39



> **STEELEYE16HD** Hybrid digital video recorder 16 channel \*Q3 2012



**HARDWARE Features**

- 16 channel HD-SDI dvr following smpte 292M standard
- Recording speed: 400/480 fps at 1080P resolution. H264AVC standard compression
- Option for 2 video output HDMI
- 16 opto-insulated inputs programmable and 8 relay outputs (1A/12V), 8 open collector outputs (100mA/12V)
- Integrated DVD-RW recorder
- 2000 Gbyte or higher SATA HD for video surveillance applications (up to extra 4 HD). Raid 0 or 1
- NAS and DAS external option
- 2 RS485 serial line for local management or speed dome
- 2 integrated LAN 10/100/1000 Base T
- Watch dog and fault circuit
- Operative system 2011 on flash disk
- Size 435x134x400
- Table mounting with 19" rack 3U option
- Power supply: 230Vac/50Hz

**Functional features for analogue cameras**

- Real time DVR with 1080p at H264AVC. Live video and recording setting independent on each camera
- O.S.D. programmable for each channel

**General features**

- Remote set up by WEB interface
- Recording continuous and on alarm
- Blind detection function
- Video controls (Bright, Contrast, Sat, Hue) independently for each channel
- Video export: USB Key, DVD,
- Privacy protection
- Crypto protected images
- Remote software

## > SKY8H HDCCTV 8 channel digital video recorder



- 8 channel HD-SDI dvr dual channel H264 Jpeg
- HD-SDI video input standard SMPTE 292M (1080p/720p )
- 1 HDMI/VGA output supporting 1080p
- Live viewing 240fps 1080p 720p selectable 1,4,9 channel
- Recording 120 fps at 1080p resolution and 240fps at 720p resolution
- 8 input and 4 output programmable
- 4 audio input 1 audio output
- Motion detection 22x15 grid
- 1 Tbytes HDD .Up to 4 HDD sata mounting option.  
DVD writer and USB interface built in
- Option for external storage. eSATA built in Lan interface 10 100
- Base T supporting TCP/IP, ARP, ICMP, DHCP, PPPoE, UDP, SMTP, SNMP, FTP, SNTp, HTTP, TLS
- Supporting dynamic IP through DDNS
- RS485 for PTZ
- Remote control by web interface or software management.  
Mobile webpage supported for iPhone, Blackberry Android platform
- Working temperature +5C° +45C°
- Dimension 445x442x88
- Power 100-240Vac 75 Watt

## > SKY16H HDCCTV 16channel digital video recorder \*Q2 2012

Same features of VDHD800H but with following difference

- 16 channel HD-SDI dvr dual channel H264 Jpeg
- Live viewing 480fps 1080p 720p selectable 1,4,9,16 channel
- 16 input and 4 output programmable

## > SKY4H HDCCTV 4channel digital video recorder

Same features of VDHD800H but with following difference

- 4 channel HD-SDI dvr dual channel H264 Jpeg
- Live viewing 120fps 1080p 720p selectable 1,4 channel
- Recording 60fps at 1080p resolution and 120fps at 720p resolution
- 4 input and 4 output programmable

## > SKY4HL HDCCTV 4 channel digital video recorder Entry level \*Q2 2012

Same features of VDHD400H but with following difference

- Recording 30fps at 1080p resolution and 60fps at 720p resolution

### > **VDHDT600012** HDCCTV box camera True Day&Night with WDR e 3DNR and ICR mechanical filter



- 2,2M Digital CMOS sensor Panasonic 1/3" progressive
- Video output Bt.1120, HD-SDI and analogue 1Vp-p (75 ohm, composite)
- Digital Resolution
- 1080P (30fps) 720P (60fps) 1100 tv lines. Analogue 750 TV lines
- Minimum illumination
  - Color 0.002Lux
  - BW DSS: 0.0008Lux
- True Day&Night con ICR mechanical filter
- Lens mount C/CS
- WDR (Wide Dynamic Range)e 3D DNR noise reduction
- Zero Defect Sense-Up Function (x512)
- Eclipse Function Internal/Line lock Function
- S/N ratio > 50db (AGC off)
- Digital zoom (x1-x32). DIS (Digital Image Stabilization)
- Motion Detection integrated. RS485 / PELCO-D optional
- LSC (Lens Shading Compensation)
- Privacy Mask (Polygonal Mosaic)
- O.S.D function (On screen display)
- Power supply 12Vdc/24vac 230mA



### > **VD2812MP** 2 Megapixel Varifocal 1/3" auto iris 2,8 - 12 mm lens

- Varifocal 1/3" auto iris 2,8 - 12mm lens. F1,4-360
- CS mount and manual focus



### > **VD0550MP** 2 Megapixel Varifocal 1/3" auto iris iris 5 - 50 mm lens

- Varifocal 1/3" auto iris 5 - 50mm lens. F1,6-360
- CS mount and manual focus

### > **VDHD41VED** HDCCTV infrared camera 2,8-10mm varifocal True Day&Night with WDR e 3DNR and ICR mechanical filter



- 2,2 M Digital CMOS sensor Panasonic 1/3" progressive
- Video output Bt.1120, HD-SDI and analogue 1Vp-p (75 ohm, composite)
- Digital Resolution 1080P (30fps) 720P (60fps) 1100 tv lines
- Analogue 750 TV lines
- Minimum illumination Color: 1.0Lux
  - B/W: 0.5Lux
  - Color DSS: 0.002Lux
  - BW DSS: 0.0008Lux
- True Day&Night con ICR mechanical filter
- Lens 2,8-10mm varifocal and 40 IR LED
- WDR (Wide Dynamic Range) e 3D DNR noise reduction
- Zero Defect Sense-Up Function (x512)
- Eclipse Function Internal/Line lock Function
- S/N ratio > 50db (AGC off)
- Digital zoom (x1-x32) DIS (Digital Image Stabilisation)
- Motion Detection integrated. RS485 / PELCO-D optional
- LSC (Lens Shading Compensation)
- Privacy Mask (Polygonal Mosaic)
- O.S.D function (On screen display)
- Power supply: 12Vdc/24vac 300mA
- IP 66 rating
- Dimension: 72x72x140mm

**> VDHD40VHAD HDCCTV infrared camera 2,8-10mm varifocal  
True Day&Night with WDR e 3DNR and ICR mechanical filter**



- 2,2M Digital CMOS sensor Panasonic 1/3" progressive
- Video output Bt.1120, HD-SDI and analogue 1Vp-p (75 ohm, composite)
- Digital Resolution 1080P (30fps) 720P (60fps) 1100 tv lines
- Analogue 750 TV lines
- Minimum illumination Color: 1.0Lux
  - B/W: 0.5Lux
  - Color DSS: 0.002Lux
  - BW DSS: 0.0008Lux
- True Day&Night con ICR mechanical filter
- Lens 2,8-10mm varifocal and 2x8 IR super LEDs up to 70 meters night vision
- WDR (Wide Dynamic Range) e 3D DNR noise reduction
- Zero Defect Sense-Up Function (x512)
- Eclipse Function Internal/Line lock Function
- S/N ratio > 50db (AGC off)
- Digital zoom (x1-x32) DIS (Digital Image Stabilization)
- Motion Detection integrated: RS485 / PELCO-D optional
- LSC (Lens Shading Compensation)
- Privacy Mask (Polygonal Mosaic)
- O.S.D function (On screen display)
- Power supply: 12Vdc/24vac 350mA
- Ip 66 rating
- Dimension: 93x90x235

**> VDHD70VA HDCCTV minidome camera 2,8-10mm varifocal  
True Day&Night with WDR e 3DNR and ICR mechanical filter**



- 2,2M Digital CMOS sensor Panasonic 1/3" progressive
- Video output Bt.1120, HD-SDI and analogue 1Vp-p (75 ohm, composite)
- Digital Resolution 1080P (30fps) 720P (60fps) 1100 tv lines
- Analogue 750 TV lines
- Minimum illumination Color: 1.0Lux
  - B/W: 0.5Lux
  - Color DSS: 0.002Lux
  - BW DSS: 0.0008Lux
- True Day&Night con ICR mechanical filter
- Lens 2,8-10mm varifocal
- WDR (Wide Dynamic Range) e 3D DNR noise reduction
- Zero Defect Sense-Up Function (x512)
- Eclipse Function Internal/Line lock Function
- S/N ratio > 50db (AGC off)
- Digital zoom (x1-x32) DIS (Digital Image Stabilization)
- Motion Detection integrated: RS485 / PELCO-D optional
- LSC (Lens Shading Compensation)
- Privacy Mask (Polygonal Mosaic)
- O.S.D function (On screen display)
- Power supply: 12Vdc/24vac 230mA
- Ip67 rating
- Dimension: 143Øx 108mm



> **VDSPHD20** HDCCTV Speed dome 20x optical *\*on request*

- 2,2M Digital CMOS sensor Panasonic 1/3" progressive
- Video output Bt.1120, HD Digital Resolution 1080P (30fps) 720P (60fps)
- Zoom: 20X optical 12x digital
- 4,7mm 984mm lens
- 8 Alarm input (NC/NO) and 2 alarm output (NC / NO)
- S/N ratio 50 dB (AGC: Off)
- Minimum illumination Color 0.1 Lux at F1.6 - B/W 0.02 Lux at F1.6
- Pan range: 360° Continuous Tilt Range: 0° - +94 - Pan speed 360°/s. Tilt speed 150° /s
- Osd in English
- 8 Privacy zone and motion detection function
- 255 Preset position 8 tour
- Iris e ICR, Home Position, Patrol function
- IP 66 rating
- Size 236(Ø) x 325.9(H) mm - 166(Ø) dome
- Weight: 4,4Kkg
- Power 24Vac adapter not included 18W
- Working temperature -20°C, +50°C heater included
- Wall bracket included

> **VDTF24AC** 24Vac transformer for speed dome



> **TFTLCD17DHDMI** 17" flat monitor LCD with HDMI input

- 17" TFT Monitor ( Grade A)
- Resolution: 1024x768
- Brightness: 260 (cd/m2)
- Aspect ratio: 4:3
- Contrast ratio: 500:1
- Pixel Pitch: 0,264mm
- Viewing angle: 70(H), 70(V), 60(UP), 45(DOWN)
- Color: 16,7M
- Video input: 1 x HDMI input
- Button auto/menu/Up/Down/Power
- Power supply: 12Vdc Consumption < 24W. Switching power supply: 90-260Vac included
- Table mounting: Vesa compatible
- Weight: 3,5Kkg carton included



> **VDHS04** 4 input 1 output HDMI switcher

- Compliance HDMI 1.3a
- Support different resolution and up to 720p , 1080i e 1080p 60Hz
- Build in auto jump function to automatically select the new video input



> **VDHDCVDH** Converter for HD-SDI video signal

- 1 HD-SDI video output. Standard SMPTE292M compatible plus 1 HDMI output
- Capable to reach 200mt capability
- Power supply: 12Vdc 100mA



> **VDHE01S** Transmitter for HDMI over CAT5/6 up 30/50/70mt

- Compliant HDMI 1,3a
- Up to 70mt 1080i 50mt 1080p
- Built in auto equalization
- Up to 30 meters con passive receiver VDHE01SER at1080p
- No need external power



> **VDHE01SER** Receiver for per HDMI over CAT5/6 up to 30/50mt

- Compliant HDMI 1,3a
- Up to 30 meters with VDHE01S at 1080p, 50 mt at 1080i
- No need external power

> **VD9331DRRR** Receiver for HDCCTV video signal and transceiver rs485 over fiber optics. Rack 19" mount *\*on request*

- Converter for video signal SMPTE292M-295M over multimode fiber optics
- Automatic configuration for display format
- 1 BNC connector transmitter, 2 BNC with loop for receiver
- Transceiver rs485 with 4 pin terminal block ( option )
- Bandwidth supported from 270Mbps to 1,485Gbps
- Working temperature: -30C° + 70C°
- Power: 5Vdc 6W
- Dimension: 201X192X28 stand alone 485X256X177 Rack 19" 1U

> **VD9331DT** Transmitter for HDCCTV video signal over fiber optics *\*on request*

Same features of VD9331DRRR

> **VD9331DR** Receiver for HDCCTV video signal over fiber optics *\*on request*

Same features of VD9331DRRR

> **VD9331DRR** Receiver for HDCCTV video signal over fiber optics Rack 19" mount *\*on request*

Same features of VD9331DRRR

> **VD9331DTR** Transmitter for HDCCTV video signal and transceiver rs485 over fiber optics *\*on request*

Same features of VD9331DRRR





### > NET EYE Teledata NVR software for IP cameras Onvif Standard

- Up to 64 IP cameras
- Full screen display 4, 9, 16, e 32 cameras
- Recording up to a 25fps for all cameras in megapixel resolution
- Different recording format : SXGA (1280x960) , SXGA+ (1400X1050) , HD 720 e HD1080
- Image recording with time slot ,motion alarm , or alarm trigger .
- Remote and local playback functions.
- Security password with different user level
- Manage PTZ cameras and speed dome
- Pentaplex functions ( local recording, local visualization, playback , remote visualization)
- Image saving on external HD or USB
- Remote interface VNC
- Remote SW upgrade
- Multilanguage Software
- SO Windows 7 o server 2003. And operating system EMBEDDED XPE e XP2011
- Compatible brands: Teledata and ONVIF

### > NET EYE CLIENT Client software for viewing IP cameras Onvif Standard and Steeleye

- Software with capability of 64 + 64 video streams coming from IP cameras end/or Steeleye
- First 64 video stream on monitor 1, second 64 streams on monitor 2
- Live viewing full screen , 4 , 9, 16, 32 and 64 video for each monitor
- Remote playback on single camera
- Password management
- Windows 7 or server 2003 operative
- Compatible products: Teledata and ONVIF IP cameras
- Multi language software

### > NET EYE WALL Video matrix Visualizing Software for IP products *\*Q2 2012*

- Multi screen stream video view Up to 4 monitors usable
- Full screen 2x2 up to 64 video cameras for monitor view
- Compatible models: Teledata, ACTI and protocol ONVIF

### > MINI EYE NVR software for IP cameras untill 16 IP video cameras *\*on request*

Same features NET EYE with:

- Management up to 16 IP video cameras
- Full screen, 4, 9, 16 video cameras view



### > OUNETEYE Output relè for Neteye SW

- 4 relè card for HWSERVERNETEYE
- USB interface



### > **NASTD Network storage server** *\*on request*

- Network storage server for storing video streams
- Up to 4 HD sata 3 gbytes each o (Option for 8 e 12 HD units)
- RAID 0, 1, 5, 6
- 2 Lan Gbytes
- Size 44x430,5x 457,5 mm rack 19" 1 U
- Weight 7,1Kgm



### > **HWSERVERNETEYE HW for SW Neteye and SW Minieye**

- HW management SW NetEye
- Available storage capacity of the second variable
- Request more information



### > **HWCLIENTNETEYE HW for SW NeteyeClient**

- HW to SW management NeteyeClient
- Available outputs Variable Monitor
- Request more information



### > VDNVR116 16 channel network video recorder



- Frame rate and resolution 480 fps (D1, H.264)160fps( 1,3Mpixel)
- Two way audio
- CPU &Memory ARM9 500Mhz/128MB DDR RAM
- Ethernet 10BaseT / 100BaseT/1GBaseT
- HDD SATA 2 Slot. Max. Capacity: 4TB (2TB per HDD) HD 1gbytes. Supported external SATA and Raid 0, 1
- Full control off the NVR by web interface
- Live view 1/4/9/13/16 by web interface
- Play back 1/4 image export image on local computer or on USB
- Password management , event/log and mail/ftp event action
- 8 digital input and 4 digital output, 1 RS 485
- Temperature Operating: 5 °C - 45 °
- Power: 19V DC/90W
- Dimensions: 220 x 215 x 81 mm



### > VDNVR108 8 channel network video recorder *\*on request*

Same feature of VDNVR116 but with following difference:

- Frame rate and resolution: 240 fps (D1, H.264), 80fps ( 1,3Mpixel)
- Not supported external SATA and Raid 0, 1



### > VDNVR104 4 channel network video recorder *\*on request*

Same feature of VDNVR116 but with following difference

- Frame rate and resolution: 120 fps (D1, H.264), 40fps ( 1,3Mpixel)
- Not supported external SATA and Raid 0, 1

## > Supported cameras-For additional info please ask model list

Teledata Axis/Sony/Panasonic/AVTech/Canon/D-Link/ACTi/Zavio/ AMTK/ Vivotek/Arecont Vision/Etrovision/Level 1/Mobotix/ Toshiba/Abus/Planet/ Pixord/IQInvision/A-Linking/Brickcom/ Hunt

## > Minimum HW requirment

- CPU: Intel Core 2 Duo at 2.4 Ghz or higher
- RAM: 1GB or above

### > **VD9171** IP Camera 2Megapixel resolution ICR Day&Night



- Megapixel CMOS progressive sensor.
- C-mount o CS mount Lens
- 1600x1200 pixels
- Minimum illumination: 0,5 lux ( 30 IRE F 1,4 colour ) 0,01 lux ( 30 IRE F1,4 B/W)
- Automatic IR Cut Filter Switching
- Audio transmission
- Video stream
- Dual codec and dual stream H264 e Mjpeg ( 720P/30fps + VGA/30fps )
- Maximum resolution Mjpeg 1600x1200 25fps, H264 1280x960 15fps o 1280x720 30fps
- Configurable video compression from 16Kbit/s a 20Mbit/s
- 1 input and 1 output alarm
- 1 BNC output TVpp
- Working temperature: -10 °C - 50 °C
- Power Supply: 12V DC / 1A
- Dimension: 140(W) X 65(H)X 55(D) mm

### > **VD9171P** IP Camera 2 Megapixel resolution ICR Day&Night with Poe

Same features VD9171P with:

- POE functionality



### > **VD358B** Varifocal 1/3" auto iris 3,5 - 8 mm lens F1,4-360

- Varifocal 1/3" auto iris 3,5 - 8 mm lens F1,4-360
- CS mount and manual focus



### > **VD358M** Varifocal 1/3" manual iris 3,5 - 8 mm lens F1,4-360

- Varifocal 1/3" manual iris 3,5 - 8 mm lens F1,4-360
- CS mount and manual focus



### > **VD615A** Varifocal 1/3" auto iris 6 - 15mm lens F1,4-360

- Varifocal 1/3" auto iris 6 - 15mm lens F1,4-360
- CS mount and manual focus



### > **VD615M** Varifocal 1/3" manual iris 6 - 15 mm lens F1,4-360

- Varifocal 1/3" manual iris 6 - 15 mm lens F1,4-360
- CS mount and manual focus



### > **VD2812A** Varifocal 1/3" auto iris 2,8 - 12mm lens F1,4-360

- Varifocal 1/3" auto iris 2,8 - 12 mm lens F1,4-360
- CS mount and manual focus



### > **VD2812M** Varifocal 1/3" manual iris 2,8 - 12 mm lens F1,4-360

- Varifocal 1/3" manual iris 2,8 - 12 mm lens F1,4-360
- CS mount and manual focus



> **VD660A** Varifocal 1/3" auto iris 6 - 60 mm lens F1,6

- Varifocal 1/3" auto iris 6 - 60 mm lens F1,6
- CS mount and manual focus



> **VD660M** Varifocal 1/3" manual iris 6 - 60 mm lens. F1,6

- Varifocal 1/3" manual iris 6 - 60 mm lens F1,6
- CS mount and manual focus

Bullet cameras IP



> **VD9671P** Outdoor IP Camera 2Megapixel resolution ICR Day&Night with IR leds *\*on request*

- Megapixel 2 Mpixel CMOS progressive sensor
- Varifocal lens 3,6 - 16 mm mm
- 1600x1200 pixels
- Minimum illumination 0,1 lux F 1,4 colour 0, lux B/W
- 48 infrared LEDs for 25 meter distance
- Automatic IR Cut Filter Switching
- Audio transmission
- Video stream
- Dual codec and dual stream H264 e Mjpeg ( 720P/30fps + VGA/30fps )
- Maximum resolution Mjpeg 1600x1200 @ 15fps, H264 1280x960 15fps o 1280x720 30fps
- Configurable video compression from 16Kbit/s a 20Mbit/s
- 1 input and 1 output alarm
- 1 input and 1 output audio channel G711 G726
- IP rating 67. 250mm(L) x 90mm(W) x 89mm(D)
- Working temperature: -10 °C - 50 °C
- Power Supply: 12V DC and Poe IEEE802.af

Mini Dome IP



> **VD9371P** Vandalproof IP dome Camera 2Megapixel resolution ICR Day&Night *\*on request*

- Megapixel CMOS progressive sensor
- Varifocal lens 3,6 9 mm
- 1600x1200 pixels
- Minimum illumination 0,1 lux F 1,4 colour 0,01 lux B/W
- Automatic IR Cut Filter Switching
- Audio transmission
- Video stream
- Dual codec and dual stream H264 e Mjpeg ( 720P/30fps + VGA/30fps )
- Maximum resolution Mjpeg 1600x1200 @ 15 fps, H264 1280x960 15fps o 1280x720 30fps
- Configurable video compression from 16Kbit/s a 20Mbit/s
- SD/SDHC card supported
- 1 input and 1 output alarm
- 1 input and 1 output audio channel G711 G726
- IP rating 66 vandal proof . 142Øx109.8mm
- Working temperature: -10 °C - 50 °C
- Power Supply: 12V DC and Poe IEEE802.af



> **VD957218P** Outdoor speed dome Day&Night IP, zoom 18x

- 1/4" Sony exview HAD CCD
- Wide dynamic range and ICR
- F1,4 4,0 ( f 4,1 73,8mm)
- Zoom 18x optical 12x digital
- Minimum illumination 0,01Lux
- Pan speed 400°/sec tilt speed 200°/sec
- 64 preset and 5 tour available
- Protocols RTSP/RTP/UDP,RTSP/RTP/TCP,RTSP/RTP/HTTP tunneling LAN multicast IPv4, HTTP, TCP, ICMP, DHCP, NTP, SMTP, FTP, UPnP, PPPOE, DNS, DDNS
- H264, M-JPEG Dual Streams Simultaneously
- Resolution (704 x576 pixels) with up to 30fps
- Configurable video compression from 64kbit/s up to 6Mbit/s
- 2 audio channel, 1 input and 1 output standard G711, G726
- 4 input alarm and 1 output alarm. 1 BNC output 1Vpp
- Dimension: 220Øx260
- IP rating 66
- Working temperature: -10 °C - 50 °C
- Power Supply: 12Vdc / 1A and Poe

> **VD957236P** Outdoor speed dome Day&Night IP, zoom 36x

Same features than VD957218:

F1,4 4,0 ( f 3.4-122.4mm). Zoom 36x Optical 12x digital



> **VDSTSO** Bracket wall mount for speed dome VD957218P and VD957236P



> **VDSTMU** Bracket wall mount for speed dome VD957218P and VD957236P



> **VDSTPO** Bracket for pole for speed dome VD957218P and VD957236P



> **JTNETEYE** Joystick for Neteye software for PTZ management

- USB connection to Hwserversneteye

> **VD7743 4 channel video server**



- Signal converter from analog to IP type
- Video compression H264, MJPEG
- Support up to 4 stream H264 with 704x576 resolution each channel 25fps
- Dual Codec and dual stream H264 or Mjpeg
- 4 input CVBS 1Vpp with BNC connector
- 4 alarm input TTL and 4 output
- 1 RS485
- Supported protocol Pelco P e Pelco D
- Dimensions 193x162x40,5
- Working temperature: -10 °C ~ 50 °C
- Power Supply: 12V DC / 1A

> **VDP1208 Switch POE \*on request**



- Standard:IEEE802.3 10 Base(10 Mb),IEEE802.3u 100 Base-TX/FX IEEE802.3(10/100Mb), IEEE802.3af (standard Poe)
- Address table size:1024 MAC address
- Input voltage: 48Vdc for 15,4W on POE port 55Vdc for 30w on POE port
- Power consumption: 72W Max 1,5A@48Vdc, 130w Max 2,3A@55Vdc
- Overload current protection and reverse polarity protection
- Interface: ethernet port 10/100BaseTX:8port optional 6 port TX(cat.5) 2 port FX(optical fiber), or 7 Port TX(cat.5) 1 port FX(optical fiber)
- Dimensions:68mm(W)x110mm(D)x135mm(H)
- Casing: aluminum case, IP30, CE compliant
- Weight: 1 Kg

> **VDIP01 IP extender over Coax cable**



- Send IP signal over existing coax cable
- Follow 10 Base T specifications
- Transmitter and receiver isolated
- 200mt range
- No power required

> **VDIP05S Poe splitter \*on request**



- Splits 24Vdc Poe into 5 - 12 Vdc power
- Support up to 12,95 Watts
- Distance uo to 100 meters

## > STEELEYE 16MBT Hybrid digital video recorder 16 channel wall cabinet version *\*on request*



### HARDWARE Features

- 16 inputs CCIR color o b/n compatible (1.0Vp-p/75 Ohm)
- Recording speed: 400/480 fps at D1/4CIF high resolution H264AVC compression
- Recording speed: 300/360 fps at D1/4CIF high resolution H264SVC compression for maximum 12 cameras (option)
- 5 video composite outputs with alarm cyclic function
- 1 video VGA output programmable
- 16 opto-insulated inputs programmable
- 8 relay outputs (1A/12V), 8 open collector outputs (100mA/12V)
- Integrated DVD-RW recorder
- 1000 Gbyte or higher SATA HD for video surveillance applications (up to extra 4 HD). Raid 0 or 1 NAS and DAS external option
- 2 RS485 serial line for local management or speed dome
- 2 integrated LAN 10/100/1000 Base T
- Watch dog and fault circuit
- Operative system 2011 on flash disk
- Size: 555x400x200
- Table mounting with 19" rack 3U option
- Power supply: 230Vac/50Hz
- Wall cabinet version including metallic key and tamper

### Functional features for analogue cameras

- Real time DVR with D1/4 CIF resolution 25 fps each camera 264AVC and H264SVC selectable.
- Live video and recording setting independent on each camera Possibility to retrieve live and recording video in scalable format from original using H264SVC compression
- Integrated video analysis on each camera (option)
  - Outdoor motion
  - Theft and abandonment object
  - Crossing passage
  - Counting people
  - Video compression with different codec H.264, MPEG 4 (XVID)
- O.S.D. programmable for each channel
- 7Ah battery operation. Battery not included

### General features

- Remote set up by WEB interface
- Recording continuous and on alarm
- Blind detection function
- Video controls (Bright, Contrast, Sat, Hue) independently for each channel
- Video export: USB Key, DVD
- Privacy protection
- Crypto protected images
- Remote software

## > STEELEYE 8MBT Real time digital video recorder 8 channel wall cabinet version *\*on request*

Same version STEELEYE 16

## > STEELEYE 32MBT Real time digital video recorder 32 channel wall cabinet version *\*on request*

Same version STEELEYE 16

## > Steel eye Audio Management board for audio channels on Steel Eye *\*on request*

- 16 audio input channels, 1 audio output channel
- Audio compression: G.711



> **STEEL EYE 16** Real time digital video recorder 16 channel



**HARDWARE Features**

- 16 inputs CCIR color o b/n compatible (1.0Vp-p/75 Ohm)
- Recording speed: 400/480 fps at D1/4CIF high resolution H264AVC compression
- Recording speed: 300/360 fps at D1/4CIF high resolution H264SVC compression for maximum 12 cameras (option)
- 5 video composite outputs with alarm cyclic function
- 1 video VGA output programmable
- 16 opto-insulated inputs programmable
- 8 relay outputs (1A/12V), 8 open collector outputs (100mA/12V)
- Integrated DVD-RW recorder
- 1000 Gbyte or higher SATA HD for video surveillance applications (up to extra 4 HD). Raid 0 o 1 NAS and DAS external option
- 2 RS485 serial line for local management or speed dome
- 2 integrated LAN 10/100/1000 Base T
- Watch dog and fault circuit
- Operative system 2011 on flash disk
- Size 435x134x400
- Table mounting with 19" rack 3U option
- Power supply: 230Vac/50Hz

- Live video and recording setting independent on each camera Possibility to retrieve live and recording video in scalable format from original using H264SVC compression
- Integrated video analysis on each camera (option)
  - Outdoor motion
  - Theft and abandonment object
  - Crossing passage
  - Counting people
  - Video compression with different codec H.264, MPEG 4 (XVID)
- O.S.D. programmable for each channel

**General features**

- Remote set up by WEB interface
- Recording continuous and on alarm
- Blind detection function
- Video controls (Bright, Contrast, Sat, Hue) independently for each channel
- Video export: USB Key, DVD
- Crypto protection
- Crypto protected images
- Remote software

**Functional features for analogue cameras**

- Real time DVR with D1/4 CIF resolution 25 fps each camera 264AVC and H264SVC selectable.

> **STEEL EYE 8** Real time digital video recorder 8 channel

Same features to STEELEYE 16 but with:

**HARDWARE Features**

- 8 inputs CCIR colour o b/n compatible (1.0Vp-p/75 Ohm)
- Recording speed: 200/240 fps at D1/4CIF high resolution

> **STEEL EYE 32** Real time digital video recorder 32 channel

Same features to STEELEYE 16 but with:

**HARDWARE Features**

- 32 inputs CCIR color o b/n compatible (1.0Vp-p/75 Ohm)
- Recording speed: 800/960 fps at D1/4CIF high resolution

## > STEEL EYE 16M Hybrid digital video recorder 16 channel wall cabinet version



### HARDWARE Features

- 16 inputs CCIR color o b/n compatible (1.0Vp-p/75 Ohm)
- Recording speed: 400/480 fps at D1/4CIF high resolution H264AVC compression
- Recording speed: 300/360 fps at D1/4CIF high resolution H264SVC compression for maximum 12 cameras (option)
- 5 video composite outputs with alarm cyclic function
- 1 video VGA output programmable
- 16 opto-insulated inputs programmable
- 8 relay outputs (1A/12V), 8 open collector outputs (100mA/12V)
- Integrated DVD-RW recorder
- 1000 Gbyte or higher SATA HD for video surveillance applications (up to extra 4 HD). Raid 0 o 1 NAS and DAS external option
- 2 RS485 serial line for local management or speed dome
- 2 integrated LAN 10/100/1000 Base T
- Watch dog and fault circuit
- Operative system 2011 on flash disk
- Size: 555x400x200
- Table mounting with 19" rack 3U option
- Power supply: 230Vac/50Hz
- Wall cabinet version including metallic key and tamper

### Functional features for analogue cameras

- Real time DVR with D1/4 CIF resolution 25 fps each camera 264AVC and H264SVC selectable.
- Live video and recording setting independent on each camera Possibility to retrieve live and recording video in scalable format from original using H264SVC compression
- Integrated video analysis on each camera (option)
  - Outdoor motion
  - Theft and abandonment object
  - Crossing passage
  - Counting people
  - Video compression with different codec H.264, MPEG 4 (XVID)
- O.S.D. programmable for each channel

### General features

- Remote set up by WEB interface
- Recording continuous and on alarm
- Blind detection function
- Video controls (Bright, Contrast, Sat, Hue) independently for each channel
- Video export: USB Key, DVD
- Privacy protection
- Crypto protected images
- Remote software

## > STEEL EYE 8M Real time digital video recorder 8 channel wall cabinet version

Same version STEELEYE16 but with:

- Dimensioni: 550x400x200

## > STEEL EYE 32M Real time digital video recorder 32 channel wall cabinet version

Same version STEELEYE16 but with:

- Dimensions: 860x470x200

## > Steel eye Audio Management board for audio channels on Steel Eye

- 16 audio input channels, 1 audio output channel
- Audio compression: G.711



> **STARGATE 16M** DVR real time 16 channel wall cabinet version



**HARDWARE Features**

- 16 CCIR color or b/w compatible inputs (1.0Vp-p/75 Ohm)
- 4 composite Video outputs with video matrix function
- 1 VGA Video output and 1 duplicated composite output
- 32 opto-insulated inputs
- 8 relay outputs (1A/12V)
- 8 open collector outputs (100mA/12V)
- 1 audio channel
- Integrated DVD-RW reader/writer
- 500 Gbyte SATA HD or higher for video monitoring (up to 4 additional HD)
- Recording speed 400/480 fps at high resolution 4CIF
- 1 RS485 serial line for local or speed dome management
- 1 LAN 10/100 output Integrated Base T
- Watch dog circuit
- Power supply 230Vac/50Hz
- 19" rack module 4U 50cm depth

**Functional performance**

- Real time DVR with 4CIF image regulation and definition (25 frame/sec for each video channel)
- Advanced imagine analysis integrated on 16 video cameras independently for each function:
  - Slow motion
  - Motion advanced / tracking object
  - outdoor motion
  - people counter and behavioural analysis
- Selectable multiprotocol video compression in H.263, JPEG, MPEG 4
- Audio compression G.728
- Remote management software mod. Observer (Win XP) Palm view (Win Mobile)
- Motion search function associated to image play back
- Pre-alarm recording
- Compliant to DLG675/96 Standards
- Images with crypto protection
- Operating system embedded on Flash disk

> **STARGATE 8M** DVR real time 8 channel wall cabinet version

Same features to STARGATE 16M but with:

**HARDWARE Features**

- 8 CCIR color or b/w compatible inputs (1.0Vp-p/75 Ohm)
- Recording speed 200/240 fps at high resolution 4CIF

## > NETTUNO 8M Professional DVR fanless 8 channel wall cabinet version



### HARDWARE Features

- 8 CCIR color or b/w compatible inputs (1.0Vp-p/75 Ohm)
- 4 composite Video outputs with video matrix function
- 1 VGA Video output and 1 duplicated composite output
- 16 opto-insulated inputs
- 4 relay outputs (1A/12V)
- 4 open collector outputs (100mA/12V)
- 1 audio channel
- External DVD-RW reader/writer on USB port
- 500 Gbyte SATA HD or higher for video monitoring
- Recording speed 100/120 fps at 4CIF resolution
- 1 RS485 serial line for local or speed dome management
- 1 LAN 10/100 output Integrated Base T
- Watch dog circuit
- Power supply 230Vac/50Hz

### Functional performance

- Real time DVR with 4CIF image regulation and definition (25 frame/sec for each video channel)
- Advanced image analysis integrated on 8 video cameras independently for each function: - Slow motion - Motion advanced / tracking object - outdoor motion, - people counter and behavioural analysis
- Selectable multiprotocol video compression in H.263, JPEG, MPEG 4
- Audio compression G.728
- Remote management software mod. Observer (Win XP) Palm view (Win Mobile)
- Motion search function associated to image play back
- Pre-alarm recording
- Compliant to DLG675/96 Standards
- Images with crypto protection
- Operating system embedded on Flash disk

## > NETTUNO 4M Professional DVR fanless 4 channel wall cabinet version

Same features to NETTUNO 8M but with:

### HARDWARE Features

- 4 CCIR color or b/w compatible inputs (1.0Vp-p/75 Ohm)

## > TD RAID Additional HD with mirroring function of the Main HD

- Automatic function reset without loss of data in the event of a fault on the main HD



## > TELECOMANDO Remote control for Teledata DVRs

- Infrared USB receiver
- Provides remote control of Teledata DVRs

## > TD SVGAPAL SVGA output switch for PAL monitor

- Replicates the SVGA output on the service monitor into a standard PAL monitor output; it also maintains the SVGA output.
- Maximum resolution 1600\*1024 pixels SVGA => 1 PAL + 1 SVGA
- Assembled inside the Teledata DVRs



### > GUARDIAN 4A H264 Digital video recorder 4 channel



#### HARDWARE Features

- Video Input: 4 X (1Vpp 75 Ohm) BNC
- Video Output: 1 X (Monitor Out) BNC
- XGA Output: Adjustable 1440 X 900 (MAX)
- Audio Input: 4 X RCA , Output: 1 X RCA
- MultiMotion Detection Areas (Alarm Trigger, Motion Trigger, Video Loss)
- Remote Back Up – Playback via IE browser
- Up to 720 X 480 D1 Recording resolution NTSC MAX 120 fps / PAL: MAX 100 fps
- Display Frame: NTSC: MAX 120 fps / PAL: MAX 100 fps D1 resolution
- Compression H.264
- HDD 500 GB included
- Network & Remote Control: SMTP, DHCP, PPPoE, TCP/IP, DDNS
- PTZ Control: YES (PELCO P-D)
- POWER SUPPLY: DC 12V/4A (AC100 V 240 V 50/60 Hz)
- Dimension: 314mm X 430mm X 53mm (L X W XH)
- Operating Temperature: 0°C - 46°C
- Weight: 2,83 Kg (without HDD and Power Adapter)

### > GUARDIAN 8A H264 Digital video recorder 8 channel

Same features to GUARDIAN 4 but with:

#### HARDWARE Features

- Supports 4 Audio inputs – 8 Video Inputs
- Display Frame: NTSC: MAX 240 fps / PAL: MAX 200 fps
- Recording Frame: NTSC: MAX 240 fps / PAL: MAX 200 fps



### > GUARDIAN 16A H264 Digital video recorder 16 channel

Same features to GUARDIAN 4 but with:

#### HARDWARE Features

- Video Input: 16 X (1Vpp 75 Ohm) BNC
- Audio Input: 4 x RCA (CH4 Two-way Audio)
- XGA Output: Adjustable 1280 X 10240 (MAX)

#### ACCESSORIES

### > ALIMUNICO Power supply for all recorders GUARDIAN



### > VDT6000 WDR/3D DNR True Day&Night Box Camera

- Sony 1/3" SuperHAD II CCD
- High Resolution 700TV Lines
- Min illumination 0.0002 Lux (15IRE,F1.2)
- True Day&Night by mechanical ICR
- WDR (Wide Dynamic Range)
- 3D DNR (Digital Noise Reduction)
- DSS function
- Zero Defect Sens-Up Function (x512)
- Eclipse Function Internal/Linelock Function
- Digital Zoom (x1-x10) Back Light Compensation
- DIS (Digital Image Stabilization)
- Motion Detection RS485 / PELCO-D
- LSC (Lens Shading Compensation)
- Privacy Mask (Polygonal Mosaic)
- O.S.D menu function
- Power supply: AC90 -240V

### > VDT6000 12 WDR 3D DNR True Day&Night Box Camera, 12Vdc *\*on request*

Same feature of VDT6000 but with:

- Power supply: 12Vdc

### > VD6306 Day&Night video camera DSP 1/3" SONY

- 530 line colour TV
- Composite video output 1Vp-p/75ohm 0.5 Lux F1,2 0 Lux With active IR
- Automatic BLC
- Automatic electronic shutter
- S/N ratio = 48db
- Operating temperature -10C° + 50C°
- Power supply: 230Vac
- Consumption: 3W



### > VD630612 Digital camera Day&Night DSP 1/3" SONY *\*on request*

Same features to VD 6306 but with:

- Power supply: 12Vd
- Consumption: 250mA



> **VD358B** Varifocal 1/3" auto iris 3,5 - 8 mm lens F1,4-360

- Varifocal 1/3" auto iris 3,5 - 8 mm lens F1,4-360
- CS mount and manual focus



> **VD358M** Varifocal 1/3" manual iris 3,5 - 8 mm lens F1,4-360

- Varifocal 1/3" manual iris 3,5 - 8 mm lens F1,4-360
- CS mount and manual focus



> **VD615A** Varifocal 1/3" auto iris 6 - 15mm lens F1,4-360

- Varifocal 1/3" auto iris 6 - 15mm lens F1,4-360
- CS mount and manual focus



> **VD615M** Varifocal 1/3" manual iris 6 - 15 mm lens F1,4-360

- Varifocal 1/3" manual iris 6 - 15 mm lens F1,4-360
- CS mount and manual focus



> **VD2812A** Varifocal 1/3" auto iris 2,8 - 12mm lens F1,4-360

- Varifocal 1/3" auto iris 2,8 - 12 mm lens F1,4-360
- CS mount and manual focus



> **VD2812M** Varifocal 1/3" manual iris 2,8 - 12 mm lens F1,4-360

- Varifocal 1/3" manual iris 2,8 - 12 mm lens F1,4-360
- CS mount and manual focus



> **VD660A** Varifocal 1/3" auto iris 6 - 60 mm lens F1,6

- Varifocal 1/3" auto iris 6 - 60 mm lens F1,6
- CS mount and manual focus



> **VD660M** Varifocal 1/3" manual iris 6 - 60 mm lens. F1,6

- Varifocal 1/3" manual iris 6 - 60 mm lens F1,6
- CS mount and manual focus

### > VD703 IR Camera middle resolution



- Colour video camera -CCD Sony 1/3" 420 TVL
- Composite video output 1Vp-p/75ohm
- 3,6 mm lens
- 12 LEDS with 15m range capacity
- Minimum illumination 0 lux/F1.2
- Ip rating IP55
- Operating temperature: -10C° + 50°C
- Power supply: 12Vdc 250mA

### > VD704 IR Camera middle resolution

Same feautres to VD703 but with:

- Colour video camera -CCD Sony 1/3" 540 TVL

### > VD758A IR camera with varifocal lens middle resolution



- 420 TVL
- SONY 1/3" CCD
- Lens 4-9 mm Varifocal Auto Iris Lens
- Mini. Illumination: 0,01 Lux
- IR LED: 36 LED units
- IR View Distance 35 m
- Waterproof IP66
- Electronic Shutter Time 1/50-1/100,000s
- White Balance automatic
- Back Light Compensation
- Storage Temp. -30° C +60° C RH95%MAX
- Power: 12 Vdc 400mA
- Dimension 228 x 97 x 84 mm

### > VD759 IR camera with varifocal lens high resolution



Same feautres to VD748A but with:

- 540 TVL

### > VD759L2 Telecamera a LED IR alta risoluzione e varifocal

Same features to VD759 but with:

- varifocal auto iris lens 2,8 12 mm

### > VD760 IR camera with varifocal lens high resolution and mechanical IR filter



- 540 TVL
- SONY 1/3" CCD
- Lens 4-9 mm Varifocal Auto Iris Lens
- ICR mechanical
- Mini. Illumination: 0,01 Lux
- IR LED: 36 LED units
- IR View Distance 35 m
- Waterproof IP66
- Electronic Shutter Time 1/50-1/100,000s
- White Balance automatic
- Back Light Compensation
- Storage Temp. -30° C +60° C RH95%MAX
- Power: 12 Vdc 400mA
- Dimension 228 x 97 x 84 mm





> **VD6860** Infrared video camera with Day&Night varifocal lens high resolution with mechanical IR filter



- Sony 1/3" SuperHAD CCD High Resolution 600TV Lines
- Function True Day&Night with mechanical IR
- Lens 5 - 15 mm DC Auto Iris Lens
- IR LED: 48 LED
- Minimum illumination 0,0001 lux
- Day&Night function
- View Distance 50/40mt
- Protection rating IP66
- WDR (Wide Dynamic Range)
- 3D DNR (Digital Noise Reduction)
- Auto tracking white balance
- Auto back light compensation
- DIS (Digital Image Stabilization)
- Motion Detection
- LSC (Lens Shading Compensation)
- Privacy Mask (Polygonal Mosaic)
- O.S.D menu
- Power 12DVC - 24VAC - 600mA
- Operating temperature -20°C +50°C
- Dimensions: 285 x 96 x1 25
- Weight: 1100 gr.

> **VD560IV7** 45mt Infrared camera varifocal lens 9-22 mm High resolution day night with mechanical IR



- Sony 1/3" Super HAD CCD High Resolution 600TV Lines
- Function True Day&Night
- Lens 9 - 22 mm DC Auto Iris Lens
- Minimum illumination 0 lux IR on ( 0,5 lux IR off)
- IR LED: 72 units Infrared LED Ø0,5
- View Distance 45/50mt
- IP rating IP66
- Internal/Line lock Function
- S/N ratio more than 50db
- Auto tracking white balance
- Auto back light compensation
- Operating temperature -20C° + 50C°
- Power: DC12V 600mA
- Weight: 2,3Kg bracket included

> **VD560IV8** 70mt Infrared camera varifocal lens 6-60 mm High resolution day night with mechanical IR



- Sony 1/3" Super HAD CCD High Resolution 600TV Lines
- Function True Day&Night
- Lens 6 - 60 mm DC manual Iris Lens
- Minimum illumination 0 lux IR on ( 0,5 lux IR off)
- IR LED : 8 pieces cold light IR leds
- View Distance 70/80mt
- IP rating IP66
- Internal/Line lock Function
- S/N ratio more than 50db
- Auto tracking white balance
- Auto back light compensation
- Operating temperature -20C° + 50C°
- Power: DC12V 600mA
- Weight: 2,3Kg bracket included

## > VD358PTRACK Speed Dome Outdoor Human Tracking System Sony 35x Fast Dome Camera *\*on request*



- Image Device: Sony 1/4" EXview HAD CCD,
- Horizontal Resolution
  - Color: 520 Lines,
  - Mono: 580 Lines
- Zoom Ratio: 35X Optical Zoom
- Alarm Input: 6 [(Alarm In1 - 6 (NC/NO))]
- Alarm Output: 1 (Alarm Out NC / NO)
- Signal to Noise Ratio: More Than 50 dB (AGC: Off )
- Minimum Illumination:
  - Color 0.1 Lux at F1.6
  - Mono 0.01 Lux at F1.6
- IP Rating: IP 66
- Panning Range: 360° Continuous.
- Tilting Range: - 6° ~ +96°
- Panning & Tilting Speed:
  - Manual Approx. 0.15°/s - 120°/s 8 Steps
  - Preset Approx. 1°/s - 255°/s,
  - Alarm Trigger Speed 360°/s
- Focal Length: 3.43 mm - 120 mm
- Preset: 128 Preset Position
- Control Function: Pan and Tilt, Zoom and Focus, Iris and ICR, Home Position, Patrol
- Auto Mode: TRACK
- Privacy Zone: On - Off Selectable (Up to 8 Zones Settings)
- Power Supply type: 100 - 240VAC ( 10%).
- Power Consumption: 24W (Heater: ON)
- Ambient Operation Temperature: -10°C, +50°C
- Dimensions: 326 mm (H) x 210 mm (D)
- Weight: 3.2Kg
- Brackets not included
- Use PELCO D and owner LILIN

## > VDSP8803 Speed dome 30x with IR LED integrated



- Samsung 1/4" camera IR mechanical filter
- Horizontal resolution: Color: 520 TV lines B/W: 580 TV
- Zoom: 30X optical
- 4 Alarm input (NC/NO) and 2 alarm output (NC / NO) board
- S/N ratio > 50 dB (AGC: Off)
- Minimum illumination Color 0.1 Lux at F1.6 B/W 0.02 Lux at F1.6
- IP 66 rating 24 IR illuminator on board for 140mt distance
- Pan range: 360° Continuous. Tilt Range: 0° ~ +94 -
- Pan speed 200°/7sec.- 200°. Tilt speed 0-100° /s
- Osd menu in English , 220 Preset position and 64 dwell and 3 tour
- Iris e ICR, Home Position, Patrol function
- Supported protocol Pelco D-P
- Power: 100 - 240VAC included >20W 12Vdc/24Vac
- Working temperature -40°C, +65°C heater included
- Size 326 mm (H) x 210 mm (D)
- Weight: 3.2Kg
- Wall bracket included

## > VDSP7803 Speed dome 23x with IR LED integrated Medium speed movement

Same feature of VDSP8303 but with:

- Zoom: 23X Optical
- Pan speed: 0.1°/s - 100°/s
- Tilt speed: 0-60° /s



## > VDSP60 Speed dome 12x with IR LED integrated

Same feature of VDSP8303 but with

- IP 66 rating 6 IR illuminator on board for 50mt distance
- 64 Preset position and 3 tour
- Size 326 mm (H) x 210 mm (D)with 5" metal body construction



> **VDPT20** Pendant for speed dome

- Compatible with model VDSP7803 and VD8803



> **VDPT19** Pole bracket for speed dome

- Compatible with model VDSP7803 and VD8803



> **VDPT18** Corner bracket for speed dome

- Compatible with model VDSP7803 and VD8803

> **VDBTAB** 4 input and 2 output relè module

- Compatible with model VDSP7803 and VD8803



> **VD520L** Brackets wall mount for VD358PTRACK

- Dimension: 160 x 115 x 210 mm
- Weight: 840g



> **VDCPM** Bracket for pole for model VD358PTRACK

- Maximum Load: 20kg
- Strap: Stainless Strap for Pole
- To combine with VD520L



> **VD SP005** Overvoltage protection on coaxial video line and RS 485 data line

- Connection via male-female BNC connector
- Maximum tolerated voltage: 4kV
- Bandwidth 0-1 Ghz



> **VDQA3040** Keyboard speed dome 3 axis

- Multiprotocol Pelco P, Pelco D, LG, GE e Teledata
- Master slave architecture
- 32 character display and 32 digit key
- Power supply 12vdc 500mA
- Size 350x200x62



> **VDSP001** Coaxial video surge protection

- BNC male to BNC female for Hi frequency



### > VD912 C Mini dome vandal-proof IR varifocal 3-9mm

- CCD video camera - 1/3" 540 TVL
- Varifocal lens 3-9mm
- 36 LEDS with 30m range
- Minimum illumination 0 lux/F1.2
- PAL composite video output - 1 Vp-p/75ohm (BNC)
- Dimensions 12,8 x 12,8 x 12,2
- Power supply: 12 Vdc



### > VD6VPQ Vandal-proof mini dome camera, varifocal 4-9mm Day&Night and mechanical IR filter

- Sony Super HAD II CCD 600 TVL
- Day&Night function with mechanical IR filter
- Minimum illumination 0,01
- BLC automatic function
- Lens Varifocal 4-9mm
- Vandal proof case IP66
- PAL composite video output - 1 Vp-p/75ohm (BNC)
- Power supply: 12 Vdc 400mA
- Range temp. -20°C +50°C
- Dimensions: 14,6 x 14,6 x 13,2



### > VD10VPQC Vandal-proof mini dome camera, Day&Night and vandal-proof varifocal 2.8-12mm

- Sony Super HAD Exview II CCD sensor 700 TVL
- Day&Night electronic function
- Minimum illumination 0.0002Lux(15IRE)
- Varifocal lens 2,8-12 mm
- Vandal-proof case IP66
- WDR e 3DNR function
- Motion and privacy function ( 8 zone)
- ELC, BLC, AGC and Mirror functions
- PAL composite video output - 1 Vp-p/75ohm (BNC)
- Menù OSD
- Power supply: 12 Vdc 250mA
- Range temp. -20°C +50°C
- Dimensions: 14,6 x 14,6 x 13,2



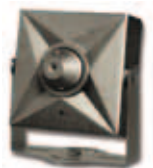
### > VD70WTD Vandal-proof mini dome camera ,varifocal 2.8-12mm Day&Night and mechanical IR filter *\*on request*

- Sony Super HAD Exview II CCD sensor 700 TVL
- Day&Night function with mechanical IR filter
- Minimum illumination 0.0002Lux(15IRE)
- Varifocal lens 2,8-12 mm
- Vandal-proof case IP67
- WDR e 3DNR function
- Motion and privacy function ( 8 zone)
- ELC, BLC, AGC and Mirror functions
- PAL composite video output - 1 Vp-p/75ohm (BNC)
- OSD Menu
- Power supply: 12 Vdc 250mA
- Range temp. -20°C +50°C
- Dimensions: 178(Ø) x 113(H)mm



> **VD504** Microcamera on PINHOLE colour card with audio

- Sony 1/3 inch CCD colour sensor
- 380 colour TVL lines
- Minimum illumination 1 lux/F2.0
- Composite video output 1Vp-p/75ohm
- 3.6mm lens
- Dimensions: 32x32 mm
- Power supply: 12Vdc



> **VD526A** Micro camera on PINHOLE card with audio and microphone

- Sony 1/3 inch CCD colour sensor
- 380 colour TVL lines
- Composite video output 1Vp-p/75ohm
- Minimum illumination 1 lux/F2.0
- 3.6mm lens
- Auto Shutter
- Built-in microphone
- Dimensions 32x32 mm
- Power supply: 12Vdc
- Case included



> **VD567** Tube colour video camera

- Sony Super Head 1/3" sensor colour video camera
- 350 TV and colour lines
- S/N ratio over 48db
- Minimum illumination 0.5 lux/F2.0
- Composite video output 1Vp-p/75ohm
- 3.6mm lens
- Protection rating IP57
- Power supply: 12Vdc
- Consumption: 80 mA
- Dimensions: 26x87 mm



> **VD828** Video camera hidden in IR colour sensor

- Sony Super Head 1/3" sensor colour video camera
- 350 TV colour lines
- Minimum illumination 0.51 lux/F2.0
- Composite video output 1Vp-p/75ohm
- 3.7 mm pinhole lens
- Passive IR sensor included
- Power supply: 12Vdc
- Consumption: 150 mA
- Dimensions: 26x87 mm



> **VD SDC422** Hidden colour video camera

- Sony 1/3 inch CCD colour sensor
- 420 TV lines
- 3.6 mm Pinhole lens
- Minimum illumination 1 lux
- Power supply: 12Vdc
- Dimensions: 87x81mm
- Weight: 280g



> **VDILINF20** 20m IR lighting device

- View angle 35° - 40°
- Protection rating IP 66
- Consumption: 10Watt
- Power supply: 230Vac
- Operating temperature: - 20C° + 60C°
- Dimensions: 105ø x 250 (L) mm
- Weight: 2,5 Kg

> **VDILINF40** 40m IR lighting device

- Same features to VD ILINF 15 but with:
- View angle: 25°
  - Consumption: 50Watt
  - Weight: 1,25 Kg



## > **MATRIX6432** Video matrix multi CPU. Up to 64 video input and 32 video output *\*on request*



- Up to 512 input and output available
- OSD integrated
- Logical selection of cameras, user management and priorities, protecting input circuits, creating macros, video loss detection, diagnostics integrated web server for configuration via PC, the basic configuration
- 1 RS232, 1 RS422, 1 RS485
- Ethernet 10/100 for remote management and master / slave connection and up to 16 remote keyboard
- 230 Vac 50 Hz power supply 18 W
- Operating temperature -10 °C - +50 °C
- Dimensions: 440x330x133 mm
- Mounting: Rack 19" 3U
- Power supply: 230 Vca 18W



## > **VDCD408** 4 input 8 output video distributor *\*on request*

- Power 12Vdc adapter 230vac 12vdc included



## > **VDCD816** 8 input 16 output video distributor *\*on request*

- Automatic gain control, normalizes video output to 1Vp-p
- Led: Video signal detection at each channel
- 2U 19" rack mount
- Power 12Vdc/24Vac adapter 230vac 12vdc included



> **VDMT36** 3.5" TFT LCD Monitor wearable *\*on request*  
for video camera installation

- Avoids phone costs, the use of walkie-talkies, and the presence of a second person for the correct installation of video cameras.
- Small dimensions: 9.5 x 9.5 x 2.5cm
- Resolution 320 RGB x 240 Dots
- Adaptor DC12V and Alkaline Battery included
- Arm band, BNC Cables, Power cable and Battery cable included
- MP NTSC\PAL switch



> **TFTLCD17D** 17" flat monitor LCD for composite video and VGA

- 17" TFT Monitor (Grade A)
- Resolution: 1024x768
- Brightness: 260 (cd/m2)
- Aspect ratio: 4:3
- Contrast ratio: 500:1
- Pixel Pitch: 0,264mm
- Viewing angle: 70(H), 70(V), 60(UP), 45(DOWN)
- Color: 16,7M
- Video input: 1 x composite 1Vp-p 75ohm - 1 x DVI 1 x VGA
- Audio input: 1 x RCA e Audio output stereo
- Button: auto/menu/Up/Down/Power
- Power supply: 12Vdc Consumption < 24W
- Switching power supply: 90-260Vac included
- Table mounting, Vesa compatible
- Weight: 3,5Kg carton included



> **TFTLCD19D** 19" flat monitor LCD for composite video and VGA

- 19" TFT Monitor ( Grade A)
- Resolution: 1280x1024
- Brightness: 260 (cd/m2)
- Aspect ratio: 4:3
- Contrast ratio: 500:1
- Pixel Pitch: 0,294mm
- Viewing angle: 70(H), 70(V), 60(UP), 45(DOWN)
- Color: 16,7M
- Video input: 1 x composite 1Vp-p 75ohm - 1 x DVI 1 x VGA
- Audio input: 1 x RCA e Audio output stereo
- Button: auto/menu/Up/Down/Power
- Power supply: 12Vdc Consumption < 24W
- Switching power supply: 90-260Vac included
- Table mounting, Vesa compatible
- Weight: 4kg carton included

> **ST LCD** SSteel ceiling bracket for TFT LCD Monitor

## Technical specifications for technical converters and video converters

TYPE OF FIBRE	MULTIMODE	MONOMODE
Fibre diameter	50Q - 62,5Q	8/10Q
Operating Wave length	850/1310nm	1310/1550nm
Type of luminous source	LED	Laser
Emitted optical power	-17dBm -14dBm	-8dBm
Receiving sensitivity	-34,5dBm	-137dBm
Attenuation	19dB - 22dB	30dB
Type of connector	ST	FC,PC/ST

### Multimode fibre

MODEL	DESCRIPTION	CHANNELS	NUMBER OF FIBRES	WAVELENGTH
VD 100M TM1	Video transmitter	1 video channel	1	850nm
VD 100M RM1	Video Receiver	1 video channel	1	850nm
VD 155M-TM2	Video transmitter + RS485 data Transceiver	1 video channel - 1 data channel	2	850nm
VD 155M-RM2	Video receiver + RS485 data Transceiver	1 video channel - 1 data channel	2	850nm
VD 155M-RC2	Video receiver + RS485 data Transceiver rack 19"	1 video channel - 1 data channel	2	850nm
VD 055M-DX M2	RS485 data Transceiver	1 data channel	2	850nm
VD 200M TM2	Video transmitter	2 video channel	2	850nm
VD 200M RM2	Video Receiver	2 video channel	2	850nm
VD 200M RC2	Video Receiver rack 19"	2 video channel	2	850nm
VD 300M TM3	Video transmitter	3 video channel	3	850nm
VD 300M RM3	Video Receiver	3 video channel	3	850nm
VD 300M RC3	Video Receiver rack 19"	3 video channel	3	850nm
VD 400M TM4	Video transmitter	4 video channel	4	850nm
VD 400M RM4	Video Receiver	4 video channel	4	850nm
VD 400M RC4	Video Receiver rack 19"	4 video channel	4	850nm

### Muonmode fibre

MODEL	DESCRIPTION	CHANNELS	NUMBER OF FIBRES	WAVELENGTH
VD 100S TM1	Video transmitter	1 video channel	1	1310nm
VD 100S RM1	Video Receiver	1 video channel	1	1310nm
VD 055S-DX M2	RS485 data Transceiver	1 data channel	2	1310nm
VD 022S-2B-AX-M1	Audio Transceiver on fibre	1 audio channel	2	1310nm4

### 19" holder rack

MODEL	DESCRIPTION	DIMENSIONS	HOUSING FOR CARDS	POWER SUPPLY
VD USR14A	Cabinet for converters – rack format 19"	Rack 19"3U	14	90/260 Vac
VD USR14A R	Cabinet for converters – rack format 19" with redundant power adaptor	Rack 19"3U	11	2 x 90/260 Vac

\*all product in this page are on request





> **VD 24760** Wireless transmitters with composite video signal

- Approval Standard CE0681
- 4 selectable frequencies 2,412 - 2, 432- 2,452 e 2,472 Ghz
- 1 Composite video input 1Vp-p/75ohm
- Power output 10mW
- Transmission range max. 300mt in open field
- Power supply 5-7Vdc
- Omnidirectional antenna
- Operating temperature - --10C° + 55C°
- Dimensions 17,8x17,8x5mm weight 5g
- Receiving unit
- 1 Composite video output 1Vp-p/75ohm
- Power supply 7.5Vdc
- Consumption 180mA adaptor included
- Weight: 5 gr.



> **TDP101** Transceiver video for UTP cable passive type CAT 5

- Device with passive transmitter and receiver function (BALUN) for composite video signal on UTP Cat5 cable
- It needs a couple of wires for each signal
- Maximum range up to 600mt B/W 400mt Colour



> **TDP102** Transceiver 4 channel video for UTP cable passive type CAT 5

- Device with passive transmitter and receiver function (BALUN) for 4 composite video signal on UTP Cat5 (100Mbs) cable
- Maximum range up to 600mt B/W 400mt Colour



> **TDP103** Transmitter video for UTP active type CAT 5

- Dip-switches for power regulation depending on the distance up to 2000mt in B/W and 1000mt colour
- Switch position for colour gain and brightness adjustment
- Extra interference immunity



> **TDP104** Receiver video for UTP active type CAT 5

- Active receiver for composite video signals on UTP Cat5 cable
- Dip-switches for power regulation depending on the distance up to 2000mt in B/W and 1000mt colour
- Switch position for brightness adjustment



> **TDP105** Receiver 4 channel video for UTP active type CAT 5

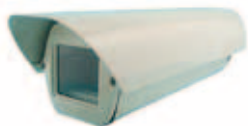
- Variable range depending on the transmitter, the type of signal (B/W or colour)
- Range between 600 e 1500mt
- Extra interference immunity



> **VDTPP016GB** 16 channel video transceiver for UTP cable with loop isolator *\*on request*

- 16 channel video transceiver
- Rack 19" 1U mounting
- No need power and prevents video-signal distortion caused by video ground loop

### > CUSTES Heated outdoor case



- Beige aluminium case
- Certified Protection rating IP 66
- Power supply: 230Vac
- Internal space available 105(W) x 100(H) x 320(L)mm
- Dimensions: 147(W) x 140(H) x 470(L)mm
- Bracket included

### > CUSTES 12 Heated outdoor case

- Beige aluminium case
- Certified Protection rating IP 66
- Power supply: 12Vdc
- Internal space available 105(W) x 100(H) x 320(L)mm
- Dimensions: 147(W) x 140(H) x 470(L)mm
- Bracket included

### > CUSTES 619 Outdoor case with a side opening



- Top standard nylon and fibre glass case
- Side opening for easy installation
- Internal cabling vandal proof
- Certified Protection Rating IP67
- Power supply: 230 Vac
- Dimensions: 15.1 x 14.5 x 39.0 cm
- Bracket included

### > CUSTES 61912 Outdoor case with a side opening

- Top standard nylon and fibre glass case
- Side opening for easy installation
- Internal cabling vandal proof
- Certified Protection Rating IP67
- Power supply: 12 Vac
- Dimensions: 15.1 x 14.5 x 39.0 cm
- Bracket included

### > S-25-15



- Switching type: 230V/15V-1.7A 50 Hz
- DC Adjustment + -10%
- Protection against: short-circuit, overload, overvoltage
- Dimensions: 98x97x35 mm.
- Weight: Kg. 0.3
- Standard: CEI EN 60950- CEI 79/2

### > S-40-15



- Switching type: 230V/15V-3A 50 Hz
- DC Adjustment + -10%
- Protection against: short-circuit, overload, overvoltage
- Dimensions: 159x97x38 mm.
- Weight: Kg. 0.55
- Standard: CEI EN 60950- CEI 79/2

### > S-60-15



- Switching type: 230V/15V-4A 50 Hz
- DC Adjustment + -10%
- Protection against: short-circuit, overload, overvoltage
- Dimensions: 159x97x38 mm.
- Weight: Kg. 0.55
- Standard: CEI EN 60950- CEI 79/2



### > S-150-15



- Switching type: 230V/15V-10A 50 Hz
- DC Adjustment 13.5V - 16.5V
- Protection against: short-circuit, overload, overvoltage
- Dimensions: 199x50x110
- Weight: Kg. 0.8
- Standard: CEI EN 60950- CEI 79/2

### > S-150-24



- Switching type: 230V/24V-6.5A 50Hz
- DC Adjustment 21V - 28V
- Protection against: short-circuit, overload, overvoltage
- Dimensions: 199x50x110
- Weight: Kg. 0.8
- Standard: CEI EN 60950- CEI 79/2-TUV

### > ALIM 1210 230Vac/12Vdc 1A adaptor (for quad, cyclical and videocamera)





### > TD-60-15 Power supply unit

- In compliance with standards: CEI 792/
- Switching type: 230/240V- 15V/14A 50 Hz
- Output adjustment: 10%
- Short circuit / overload / over voltage protection
- Maximal output current: 3A
- Alarm signals on free potential contacts Tamper: No Network, No power supply, Low battery
- Optical LED indications: Network presence, No Network, Output voltage, present battery lute voltage
- On wall cabinet, able to contain up to 15Ah storage batteries
- Dimensions: 250x100x430
- Weight: Kg. 4

### > TD-150-15 Power supply unit

- In compliance with standards: CEI 792/
- Switching type: 230/240V- 15V/10A 50 Hz
- Output adjustment: 10%
- Short circuit / overload / over voltage protection
- Maximal output current: 8A
- Alarm signals on free potential contacts Tamper: Supply failure, No power supply, Low battery
- Optical LED indications: Network presence, No Network, Output voltage, present battery lute voltage
- On wall cabinet, able to contain up to 24 x 6Ah storage batteries
- Dimensions: 60x280x450
- Weight: Kg. 28

### > TD-150-24 Power supply unit

- In compliance with standards: CEI 792/
- Switching type: 230/240V- 24V/6,5A 50 Hz
- Output adjustment: 10%
- Short circuit / overload / over voltage protection
- Maximal output current: 6A
- Alarm signals on free potential contacts Tamper: No Network, No power supply, Low battery
- Optical LED indications: Network presence, No Network, Output voltage, present battery lute voltage
- On wall cabinet, able to contain up to 17Ah storage batteries
- Dimensions: 60x280x450
- Weight: Kg. 25



> **ST/FF140** Bracket with 140 mm video camera joint



> **ST/FF160A** Bracket with 160 mm video camera joint

- In grey coloured aluminium



> **SP/ROT** Revolving metal bracket support

*\*on request*

- Allows installing the bracket on a variable axis of 90°
- Also for Speed Dome

> **SPPALT** Pole bracket for video camera

> **IMBR/P** Wall support for 14" monitor

> **IMBR/S** Ceiling Support for 14" monitor



## > **OBSERVER** Software for Windows XP Operating Systems or later versions

*free download on [www.teledata-i.com](http://www.teledata-i.com) site - Area Download*

- Client software for the remote management of Teledata digital recording devices and videosevers or IP Video Cameras on local and geographic networks via TCP/IP protocol. The software enables the remote control of the device telemetry and their complete remote programming
- The software allows the reception of events and a hierarchical management of the devices using an evolved user password level system and individual functions.
- It is also possible to use Observer to quickly review the recorded images.
- It is possible to download the recordings and save them to CD-DVD RW supports

## > **BURN BACK UP** Back up system for Teledata DVR

- Back up system for Teledata DVR devices connected to a maximum number of 36 DVRs on a geographical network via TCP/IP protocol
- FIFO or manual deletion method of recorded images.
- Widescale hierarchical management using access level passwords
- Export option for recordings to cryptographed DVD.

## > **WINWATCH ENTERPRISE** Integrated Monitoring System

- In WINDOWS XP environment with interactive and user-friendly graphic interface
- Remote-control, remote management and remote-programming functions for all devices M
- Integrated graphic maps for direct interventions
- Hierarchic access password system
- Server-client structure
- Multi monitor management
- Modular and scalable software
- One single integrated database for event searching and analyses
- Customisable to suit all customer requirements
- Point-to-Point, multidrop, switched, ISDN or LAN network connection
- Integrated database
- Able to manage different systems:
  - Fire detection units
  - Burglar alarm units
  - Access control readers and modules
  - Digital recorders
  - Video servers and IP video cameras
  - Technological devices

## Available Version

> **WINTERMINAL** Up to 2 peripherals

> **WINSUPER** Up to 6 peripherals

> **WINMAX** Up to 12 peripherals







