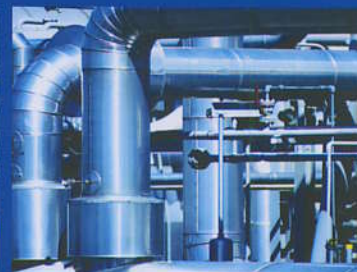
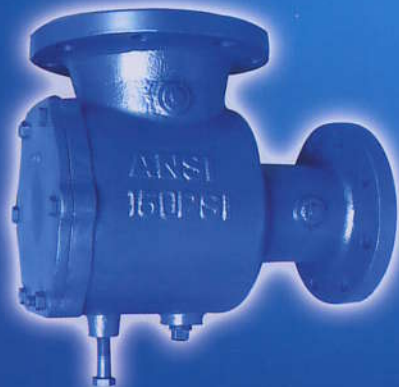


Weilong®



WEILONG VALVE CO.,LTD.

HVAC · Fire Protection · Water Works · Industrials





Company Profile

Weilong Cast Iron Valves and Ductile Iron Valves are manufactured using advanced equipment with finest materials available. All valves are designed by a professional team of dedicated valve specialists with many years experience in the industry. Manufacturing facilities are certified by ISO9001-2000. Weilong's valves have been approved by UL, FM, CE, WRAS, Australian Watermark and Australian Gas Association.



Mission Statement

We shall continually seek to improve efficiency and service to our customer.

We aim to do it right first time, every time, with a program of continuous improvement in all facets of the business.

We shall provide world class quality, engineering and service to our valued customer and grow our business via co-operation, vision and initiative.





WEILONG

MARKETING TO THE WORLD

- Europe:
UK, Ireland, Germany, France, Spain, Italy, Sweden, Russia, Poland, Slovenia, Bulgaria, Romania
- Asia:
Turkey, India, Saudi Arabia, U.A.E, Korea, Singapore, Thailand, Indonesia, Malaysia, Philippines, Taiwan, Vietnam, Jordan
- Australia
- Africa:
South Africa, Egypt, Morocco
- America:
USA, Canada, Argentina, Brazil, Chile, Colombia



Product Index

VALVE DESCRIPTION	FIGURE NUMBER	PAGE
BUTTERFLY VALVES		
● Wafer Butterfly Valve	2302/2303/2304 -----	1
● Lug Butterfly Valve	2502/2503/2504 -----	1
● Grooved End Butterfly Valve	2902 -----	2
● C504 Butterfly Valve	2102/2103 -----	2
● U-Type Butterfly Valve	2122 -----	3
● Grooved End Butterfly Valve	2952 -----	3
● Lever Handle and Gear Operator	-----	4
● Gear Actuator with Tamper Switch	-----	4
GATE VALVES		
● OS&Y Type Gate Valve BS & MSS	3113/3114 -----	5
● NRS Type Gate Valve BS & MSS	3123/3124 -----	5
● OS&Y Type Gate Valve BS3464	3119 -----	6
● NRS Type Gate Valve DIN3464	3129 -----	6
● OS&Y Gate Valve	3115/3116 -----	7
● NRS Type Gate Valve DIN3352	3126 -----	7
● OS&Y Type Grooved End Gate Valve BS & MSS	3914 -----	8
● NRS Type Grooved End Gate Valve BS & MSS	3924 -----	8
● Resilient OS&Y Gate Valve	3233 -----	9
● NRS Type Resilient GV BS5153 Type A&B/DIN3352/AWWA C515	3243/3246/3247/3248 -----	9
● NRS Type Resilient Gate Valve AWWA C509	3226 -----	10
● AWWA C509 150PSI Res NRS Gate Valve 30" to 48" FL x FL with Bevel Gear	3226 -----	10
GLOBE VALVES		
● Globe Valve BS EN 13789 / MSS SP-85	6123 -----	11
● Globe Valve DIN3356	6125 -----	11
● Triple Duty Valve	1118/1918 -----	12
CHECK VALVES		
● Swing Check Valve EN 12334/BS 5153/MSS SP-71/AWWA C508	5101/5102 -----	12
● Swing Check Valve with Lever & Weight /Spring	5108/5110 -----	13
● Swing Check Valve DIN Standard	5201/5202 -----	13
● Grooved End Swing Check Valve	5904 -----	14
● Wafer Swing Check Valve PN16/Class125	5301 -----	14
● Wafer Double Door Check Valve PN25/PN40/Class250	5304 -----	15
● Wafer Double Door Check Valve PN16/Class125	5306 -----	15
● Wafer Silent Check Valve	5312 -----	16
● Grooved End Double Door Check Valve	5905/5906 -----	16
● Silent Check Valve	5104/5105 -----	17
● Globe Silent Check Valve (EN12334)	5106 -----	17
● Flex Check Valve	5107 -----	18
● Ball Check Valve	5109 -----	18
● Thread End Ball Check Valves	5709 -----	19
● Thin Wafer Check Valves	5315/5316 -----	19
BALANCING VALVES		
● Balancing Valve	1209/1210 -----	20
ECCENTRIC PLUG VALVES		
● Eccentric Plug Valve	1105/1106/1605 -----	20
FOOT VALVE		
● Foot Valve	1120 -----	21
STRAINER		
● Y-Strainer	7101/7102 -----	21
● Y-Strainer DIN Standard	7103/7107 -----	22
● Bronze Y-Strainer	7104 -----	22
● Basket Strainer	7105/7108 -----	23
● Bronze Basket Strainer	7106 -----	23
● Suction Diffuser	7109 -----	24
● Thread End Y-Strainer	7701 -----	24
● SS Thread End Y-Strainer	7702 -----	25
● Bronze Thread End Y-Strainer	7703 -----	25
● Grooved End Y-Strainer	7901 -----	26
FIRE HYDRANT		
● Fire Hydrant DN80	9207 -----	26
BALL VALVES		
● Ball Valve DIN / NF / MSS SP-72	4102/4103/4104 -----	27
RUBBER EXPANSION JOINT		
● Single Sphere Rubber Expansion Joint	8101 -----	27
● Double Sphere Rubber Expansion Joint	8102 -----	28
● Double Sphere Union Type Rubber Expansion Joint	8701 -----	28
AIR RELIEF VALVE		
● Automatic Air Vent Valve	9701 -----	29
● Double Orifice Air Relief Valve	9101 -----	29