

Weatherproof Cameras

JBC-300W

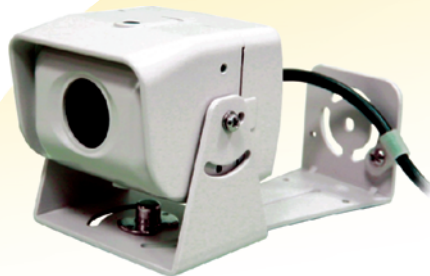
1/3" B/W Weatherproof Miniature Camera

JCC-430W

1/3" Color Weatherproof Miniature Camera

JCC-430HW

1/3" Hi-Res. Color Weatherproof Miniature Camera



Features

- JBC-300W:
EIA: 537(H) x 505(V) CCIR: 537(H) x 597(V)
420 TV Lines / 0.1 Lux @F1.2
- JCC-430W:
NTSC: 537(H) x 505(V) PAL: 537(H) x 597(V)
380 TV Lines / 0.5 Lux @F2.0
- JCC-430HW:
NTSC: 795(H) x 596(V) PAL: 811(H) x 508(V)
480 TV Lines / 0.35 Lux @F2.0
- IP 67 of IEC 529 Waterproof Standard
- Auto Gain Control
- Auto Electronic Shutter
- 4.0mm/F2.0 Lens Built-in
- DC 12V

Specification

Model	JBC-300W	JCC-430W	JCC-430HW
Image Sensor	1/3" B/W CCD Sensor	1/3" SONY Super HAD CCD	
Picture Element	EIA: 537(H) x 505(V) CCIR: 537(H) x 597(V)	PAL: 537(H) x 597(V) NTSC: 537(H) x 505(V)	PAL: 795(H) x 596(V) NTSC: 811(H) x 508(V)
Vertical Frequency	EIA: 59.94 Hz. ; CCIR: 50 Hz.	NTSC: 59.94 Hz. ; PAL: 50 Hz.	NTSC: 59.94 Hz. ; PAL: 50 Hz.
Synchronization	Internal		
Resolution	Horizontal 420 TV Lines	Horizontal 380 TV Lines	Horizontal 480 TV Lines
Low-light Sensitivity	0.1 Lux @F1.2	0.5 Lux @F2.0	0.35 Lux @F2.0
S/N Ratio	More than 48 dB (AGC OFF)		
Electronic Shutter	Auto: 1/60 (50) sec. ~ 1/100,000 sec		
White Balance	N/A	Auto White Balance (AWB)	ATW
Gain Control	Auto Gain Control (AGC)		
Waterproof Standard	IP 67 of IEC 529 Waterproof Standard		
Lens Built-in	4.0mm/F2.0 Board Lens Built-in		
Video Output	1.0 Vp-p Composite Video Output ; 75 Ohm		
Power Supply	DC 12V		
Power Consumption	Max. 1.2 W	Max. 1.5 W	Max. 2.5 W
Operating Temperature	- 10 ~ 50 degree C (14 ~ 122 degree F)		
Dimension	70.5mm (W) x 69mm (H) x 65mm (D)		
Weight	450 Grams		
Audio(Optional)	2V p-p 50Ohms.RCA connector		
Optional Lens	2.5 / 4.3 / 6.0 / 8.0 / 12.0mm/F2.0 Board Lens	2.5 / 4.3 / 6.0 / 8.0 / 12.0 16.0 mm/F2.0 Board Lens	2.5 / 2.9 / 6.0 / 8.0 / 12.0 mm/F2.0 Board Lens

Dimensions

