

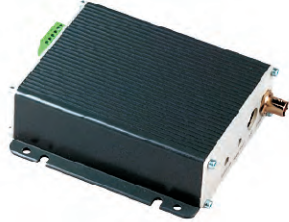
MPEG-4 Video Transcoder

WVR-130

MPEG-4 Video Transcoder with Full D1 Resolution

WVR-130A

MPEG-4 Video Transcoder with Full D1 Resolution + 2-Way Audio



Features

- ▶ Decoding MPEG-4 Video Streaming to Analog Composite Video Signal
- ▶ Full D1 MPEG-4 Video Decoding at 30/25 FPS
- ▶ QoS enabled (L3) Video Streaming
- ▶ Dual MPEG-4 Video Stream Input LAN or WAN Port Built-in
- ▶ Supports TCP/IP, UDP, HTTP, DHCP, RTP, RTSP, PPPoE, FTP & SMTP
- ▶ Digital Time Code Retrieved
- ▶ Application Software:
 - Supports Windows 2000/Win XP OS
 - Supports Up to 16 IP Cameras
 - Supports PTZ Control
 - Supports Motion Detection
 - Supports DI/DO

Specification

Model	WVR-130	WVR-130A
Image Compression	MPEG-4 ASP compliant compression	
Image Frame Rate	NTSC: 30 fps ; PAL: 25 fps	
Max. Resolution	Full D1 ; CIF ; QCIF	
Ethernet	10/100 Base-T for LAN and WAN	
Support Protocols	TCP, UDP, IP, HTTP, DHCP, PPPoE, RTP, RTSP, FTP, SMTP	
Bit Rate	28 K ~ 3 M bps	
Network	Ethernet (10/100Base-T), RJ-45 connector	
Video Output	CVBS, 1.0Vp-p with 75 Ω loading, BNC connector; Y/C, 1.0Vp-p with 75 Ω loading/0.286Vp-p with 75 Ω loading, S video connector	
Multi-stream	Up to 4 configurable frame rate/bit rate streams for preview and recording	
Serial Port	RS-485: RS-422;RS-232	
Security	Password protection : configured by the administrator	
Alarm I/O	2, TTL, terminal block	
Audio Input Compression	N/A	8 kHz, Mono, PCM
Audio Line Input	N/A	Unbalanced, 1.4Vp-p, 1Vrms, 3.5 mm jack
Audio Output Compression	N/A	8 kHz, Mono, PCM
Audio Line Output	N/A	Unbalanced, 1.4Vp-p, 1Vrms, 3.5 mm jack
Operating Temperature	+5 ~ +50 °C (40 ~ 122 °F)	
SDK	ActiveX control, C SDK	
Power Consumption	Max. 7.5 W	
Power Supply	DC 12 V ±10%	
Dimension	112mm x 37.2mm x 119mm	
Weight	350 Grams	

Dimension

