

MPEG-4 Video Server

WVS-120

Wall-mount Type MPEG-4 Video Server

WVS-120T

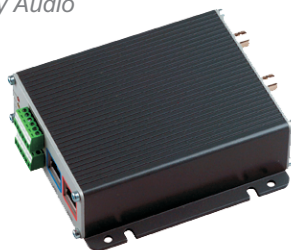
Wall-mount Type MPEG-4 Video Server With Extended Temperature Design

WVS-120A

Wall-mount Type MPEG-4 Video Server+ 2-way Audio

WVS-120AT

Wall-mount Type MPEG-4 Video Server+ 2-way Audio With Extended Temperature Model



Features

- MPEG-4 ASP Compression
- Up to Full D1 resolution
- 30/25 fps Frame Rate
- Dual MPEG-4 Video Stream Output
- LAN and WAN Port Built-in
- Supports TCP/IP, UDP, HTTP, DHCP, RTP, RTSP, PPPoE, FTP & SMTP
- QoS enabled (L3) Video Streaming
- Digital Time Code Embedded
- Motion detection
- Isolated DI/DO Supported
- RoHS Compliant
- Application Software:
 - Supports Windows 2000/Win XP OS
 - Supports Up to 16 IP Cameras
 - Supports PTZ Control
 - Supports Motion Detection
 - Supports DI/DO
- Extended Temperature Design For WVS-120T, WVS-120AT

Specification

Model	WVS-120	WVS-120T	WVS-120A	WVS-120AT
Image Compression	MPEG-4 ASP Compliant Compression			
Image Frame Rate	Full D1 (NTSC: 30 fps@720 x 480; PAL :25 fps@720 x 576) CIF (NTSC: 30 fps@352 x 240; PAL: 25 fps@352 x 288)			
Max. Resolution	Full D1			
LAN/WAN Port	10/100 Base-T for LAN and WAN			
Support Protocols	TCP, UDP, IP, HTTP, DHCP, PPPoE, RTP, RTSP, FTP, SMTP			
Bit Rate	28 K ~ 3 M bps			
Network	Ethernet (10/100Base-T), RJ-45 connector			
Composite Input	CVBS, 1.0Vp-p with 75 Ohm, BNC connector			
Composite Output	CVBS, 1.0Vp-p with 75 Ohm, BNC connector			
Multi-stream	Up to 4 Configurable Frame Rate/Bit Rate Streams for Preview and Recording			
Serial Port	RS-485 Half Duplex (Terminal Block); RS-422/RS-232 Full Duplex (Terminal Block)			
Audio	---	---	2 Way	2 Way
Extended Temperature Design	---	Yes	---	Yes
Alarm I/O	2,TTL,Terminal Block			
Web Browser	Microsoft Internet Explorer 6.0 or above			
SDK	ActiveX Control, C SDK			
Security	Password Protection : Configured By the Administrator			
Operating Temperature	+5° ~ +50° C (40° ~ 122 °F)			
Power Consumption	Max. 7.5 W			
Power Supply	DC 12 V ±10%			
Dimension	112 mm(W) x 37.2 mm(H) x 119 mm(D)			
Weight	350 Grams			

Dimension

