

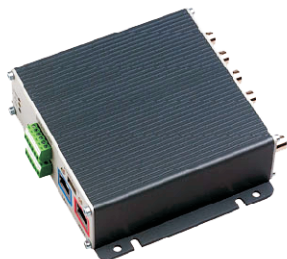
# Quad Video Server

## WVS-420Q

MPEG-4 Quad Video Server with Full D1 Resolution

## WVS-420QA

MPEG-4 Quad Video Server with Full D1 Resolution +2-Way Audio



### Features

- MPEG-4 ASP Compression
- 4 Video Inputs / 1 x Quad Output
- Up to Full D1 resolution
- 30/25 fps Frame Rate/Channel
- Dual MPEG-4 Video Stream Output
- LAN and WAN Port Built-in
- Supports TCP/IP, UDP, HTTP, DHCP, RTP, RTSP, PPPoE, FTP & SMTP
- QoS enabled (L3) Video Streaming
- Digital Time Code Embedded
- Motion detection
- Isolated DI/DO Supported
- Application Software:
  - Supports Windows 2000/Win XP OS
  - Supports Up to 16 IP Cameras
  - Supports PTZ Control
  - Supports Motion Detection
  - Supports DI/DO

### Specification

Model	WVS-420Q	WVS-420QA
Image Compression	MPEG-4 ASP compliant compression	
Image Frame Rate	NTSC: 30 fps ; PAL: 25 fps	
Max. Resolution	1 channel : Full D1(720x480 in NTSC,720x576 in PAL) 2 ~ 4 channel : CIF (352x240x in NTSC,352x288 in PAL)	
Ethernet	10/100 Base-T for LAN and WAN	
Support Protocols	TCP, UDP, IP, HTTP, DHCP, PPPoE, RTP, RTSP, FTP, SMTP	
Bit Rate	28 K ~ 3 M bps	
Network	Ethernet (10/100Base-T), RJ-45 connector	
Composite Input	4,CVBS, 1.0Vp-p with 75 Ω loading, BNC connector	
Composite Output	1.CVBS, 1.0Vp-p with 75 Ω loading, BNC connector	
Multi-stream	Up to 4 configurable frame rate/bit rate streams for preview and recording	
Serial Port	RS-485: RS-422;RS-232	
Security	Password protection : configured by the administrator	
Alarm I/O	1, TTL, terminal block	
Audio I/O Compression	N/A	8 kHz, Mono, PCM
Audio Output	N/A	Unbalanced,1.4Vp-p,1Vrms,3.5 mm jack
Operating Temperature	+5° ~ +50 °C (40° ~ 122 °F)	
SDK	ActiveX control, C SDK	
Power Consumption	Max. 9.6 W	
Power Supply	DC 12 V ±10%	
Dimension	119 mm x 41.7 mm x 122 mm	
Weight	470 Grams	

### Dimension

